

Project: **Apartment building "Moonlighting" - Geological survey**

Project ID: AA_0014 - 2019

Annex no.: 47/5b

Drilling equipment: A-300 Ingersoll-Rand Drill Rig

Location: New street 124/47, Prague

Method of drilling: **Rotary drilling**

Foreman: Joe Fieldman

Date start: 14.05.2018

Overall depth: 18,00 m

Coordinate X: 1039733,54

Operator: Ben Oldman

Date end: 15.05.2018

GWT bored: 6,70; 14,10 m

Coordinate Y: 745200,51

Documented: Andy Freeman

Scale: one page

GWT steady: 7,20 m

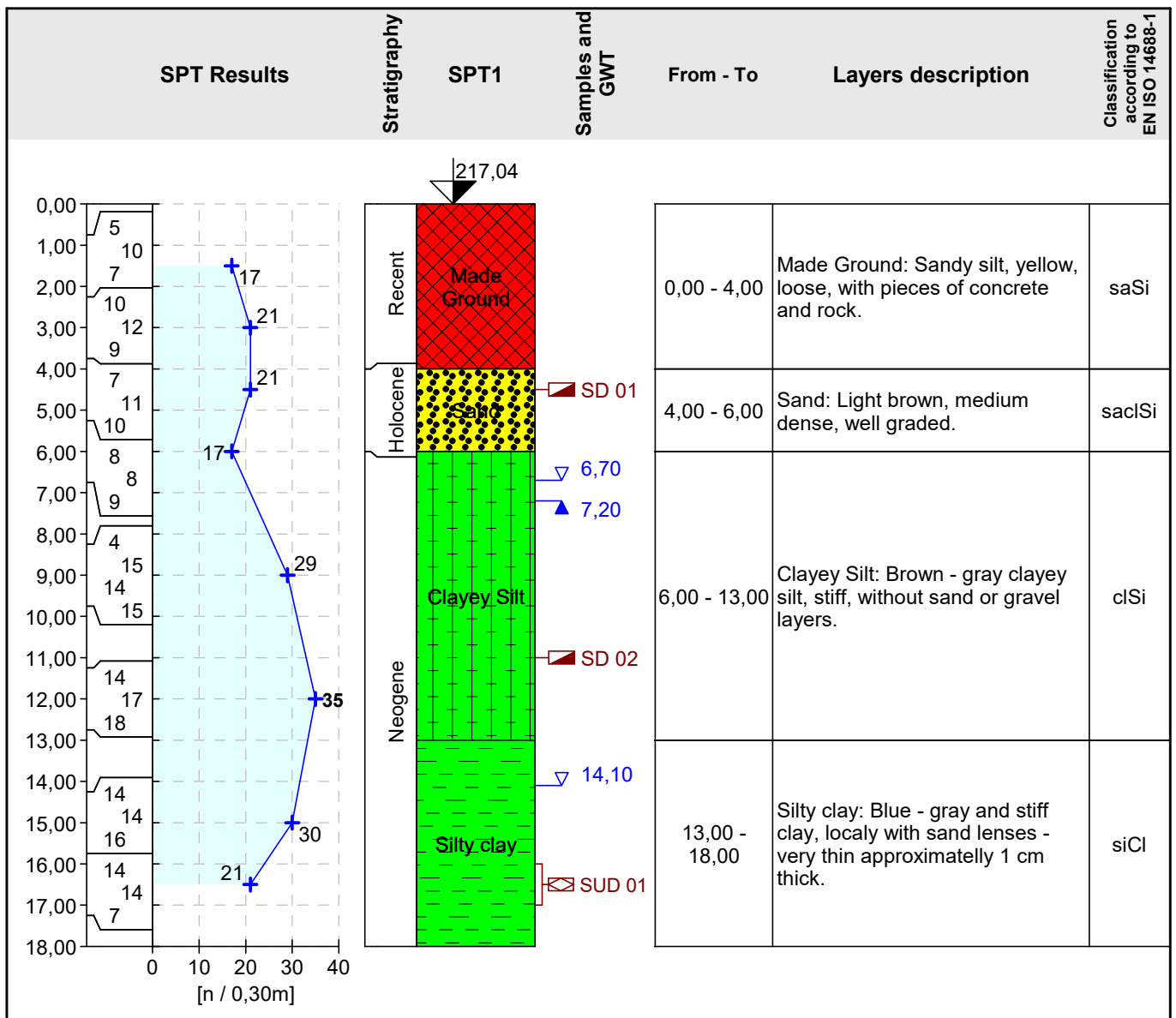
Coordinate Z: 217,04 m

Processed: Bill New

Bit - type, size: Roller Bit

Drilling:	Depth from	Depth to	Drilling dia.	Casing:	Depth from	Depth to	Casing dia.
		0,00 m	14,00 m		195 mm		0,00 m
	14,00 m	18,00 m	156 mm				

Sampler: 2" OD Std Split Spoon	Sampler hammer: Donut	Weight: 63,50 kg	Drop: 0,76 m
--------------------------------	-----------------------	------------------	--------------



Key: GWT bored GWT steady undisturbed disturbed	Notes: - Cloudy and windy, 14°C - Start time 7:00 - Loosing drilling fluid at 14,0m below terrain - ...
--	--